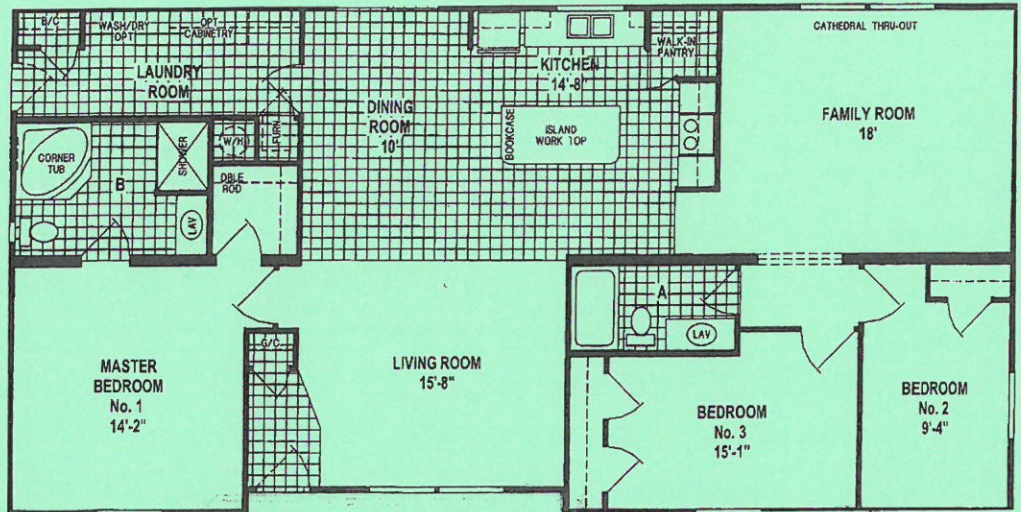
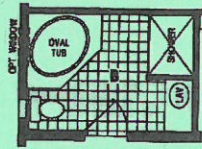


# B

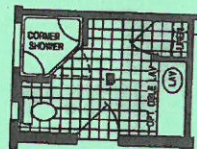
# THE LEXINGTON



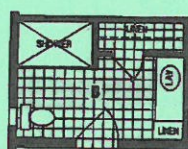
30x 60  
1795 SQ. FT.



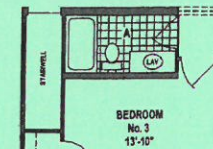
OPTION OVAL TUB BATH



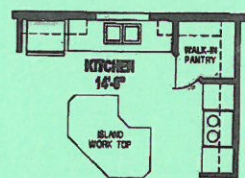
OPTION CORNER SHOWER BATH



OPTION 6' SHOWER BATH



OPTION MODULAR STAIRWELL



OPTION KITCHEN ISLAND

## Standard Features

6" Walls & Northern Insulation  
8' Sidewalls & Cathedral Ceilings  
Shingled Roof  
Thermopane "Low E" Windows  
Maintenance Free Vinyl Siding  
Thermoply Sheathing  
Sunburst 6 Panel Front Door  
9-Lite Rear Door  
Dead Bolt Locks  
Formica Back Splashes (Ceramic in Modular)  
Floor Coverings & Window Treatments

100 Amp Service (200 Amp in Modular)  
Whole House Water Shut Off  
18' Frost Free Refrigerator  
30" Gas Range  
1 Piece Fiberglass Tub (Hall Bath)  
48" Fiberglass Shower (Master Bath)  
Single Lever Faucets  
China Bath Sinks  
Hardwood Cabinet Doors & Face Frames  
Patio Door in Dining Room  
Exterior Faucets & Outlets

## Recommended Options

Architectural Shingles  
(2) 10' Dormers w/ Double Windows  
(2) Lighted Paddle Fans  
Utility Cabinets, Linen and Sink in Utility Room  
Built In Dishwasher  
Space Saver Microwave  
Smooth Top Range  
OSB Sheathing & Wind Wrap  
Window Over Utility Sink  
Glass Insert in Pantry Door

## Additional Options Shown

Decorative Glass Front Door  
Corner Oval Deck Tub  
Hardwood Molding w/ Heavy Cove  
22" French Door Refrigerator w/ Bottom Freezer  
Duma Tile Shower Surround  
Full Stone Gas Fireplace w/ Book Shelves  
42" TV Mounted on Fireplace  
Old Dublin Vinyl Siding  
Clay Doors, Windows & Trim  
Decorator Stairwell Wall

### Town and Country Housing

4285 S. Prairie View Rd, Chippewa Falls, WI 54729 (715)834-1279

Visit us on the web at [www.townandcountryhousing.com](http://www.townandcountryhousing.com)

Specifications Subject to change without notice

Paint By Others