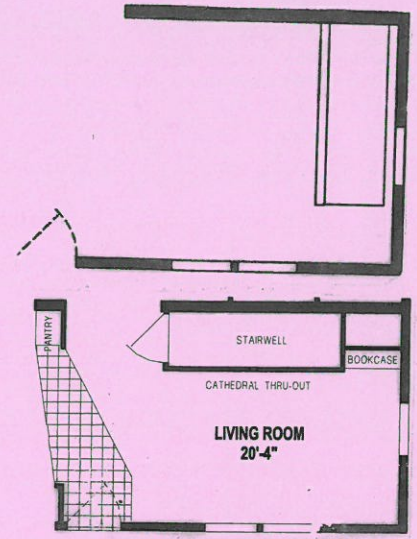
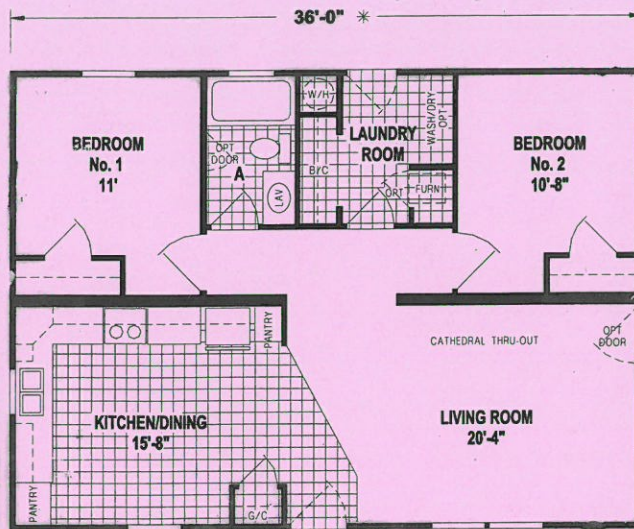


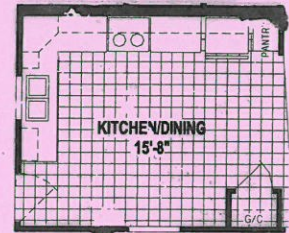
J

The Country Cottage

948 Sq. Ft
2 Bedrooms
1 Bath



OPTION MODULAR STAIRWELL



OPTION KITCHEN & DOOR

Standard Features

- 6" Walls & Northern Insulation
- 8' Sidewalls & Cathedral Ceilings
- 25 Year Shingles & Ice Guard
- Thermopane "Low E" Windows
- Maintenance Free Vinyl Siding
- Thermoply Sheathing
- Sunburst Front Door
- 9-Lite Rear Door
- Dead Bolt Locks
- Formica Back Splashes
- Floor Coverings & Window Treatments

- 100 Amp Service
- Whole House Water Shut off
- 18' Frost Free Refrigerator
- 30" Gas Range
- 1 Piece Fiberglass Tub
- Exterior GFI Outlets
- China Bath Sinks
- Oak Cabinet Doors & Face Frame
- Congoleum Heavy Gauge Legacy Floor Vinyl
- Exterior Faucet
- 40 Gallon Water Heater

Recommended Features

- OSB Sheathing & Wind Wrap
- 200 Amp Service and Lighted Paddle Fan
- Cabinets Over Washer/Dryer
- Dishwasher
- Single Lever Bath Faucet
- Hi - Low Kitchen Sink w/Bronze Faucet
- Wood Furnace Door

Additional Features Shown

- Finished Drywall in Living & Dining Rooms
- Clay Exterior Trim, Doors & Windows
- Hanging Dinette Light In Place Of LEDS
- Extra Window in Dining Room
- Cherry Cabinets & Trim
- Picture Window over Kitchen Sink
- Upgraded Mini Blinds in Living Room and Dining Room

Town & Country Housing
 4285 S Prairie View Rd, Chippewa Falls WI 54729
 715-834-1279
 Visit us on the web at www.townandcountryhousing.com

Specifications subject to change without notice - Paint By Others

