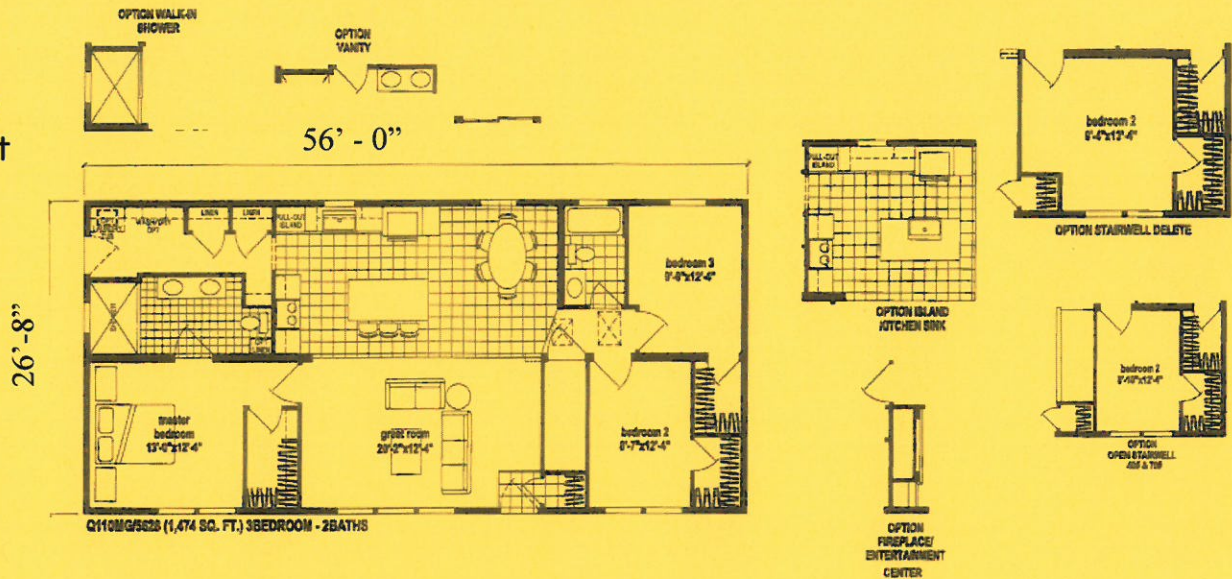


Z The Skyliner

28x56
1,474 Sq Ft



Standard Features

6" Walls and Northern Insulation
8' Sidewalls—16" O.C.
OSB Sheathing with House Wrap
Gridded Thermopane "Low E" Windows
Maintenance Free Vinyl Siding
Craftsman Insulated Fiberglass Front Door
9-Lite Insulated Rear Door
Dead Bolt Locks
Ceramic Backsplash—Kitchen & Baths
Floor Coverings & Window Treatments
30 Year Arch, Shingles with Ice Guard

200 AMP Service
KITTOPIA Kitchen
25 C.F. Side by Side Refrigerator
30" Glass Top Stainless Steel Range
Stainless Steel Dishwasher
Stainless Steel Euro Rangehood & Farmers Sink
Fiberglass Tub & Shower
Single Lever Faucets
China Bath Sinks
Exterior Faucets & Outlets
C.O. & Smoke Detectors

Suggested Options

Laundry Sink
Cabinet Over Washer/Dryer
51" Medicine Cabinet in Main Bath
Medicine Cabinet in Hall Bath
18" Overhangs
Gridded Patio Door
Optional Kitchen

Additional Options Shown

Upgrade Siding
Double Dormer
Skyline Exterior Package
Fireplace with Entertainment Shelves
(2) Linen Cabinets in Main Bath
Walk-in Duma Wall Shower
Full Wall Subway Tile in Kitchen

Town and Country Housing

4285 S. Prairie View Rd, Chippewa Falls, WI 54729 (715)834-1279

Visit us on the web at www.townandcountryhousing.com

Specifications Subject to change without notice