

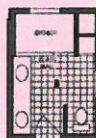
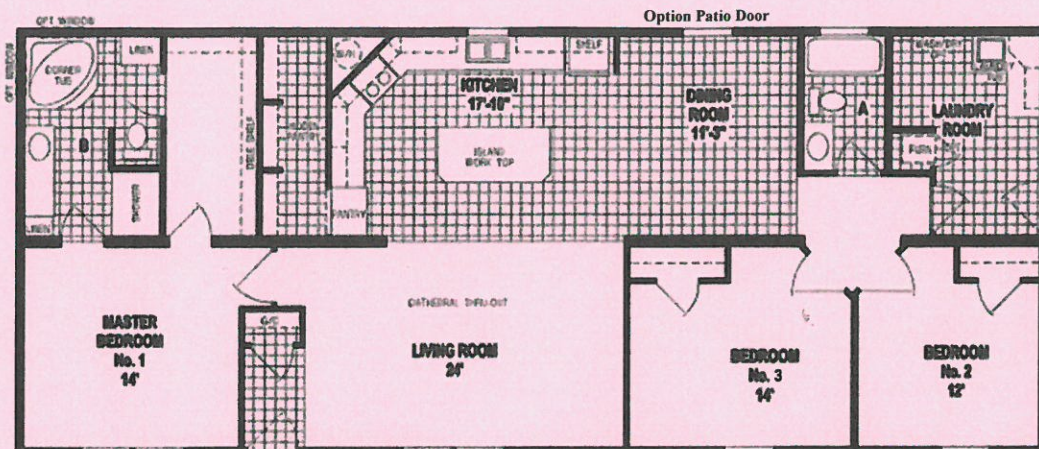
A

THE *PrairieView*

26'8 x 64

1707 Sq Ft

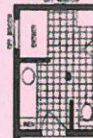
3 Bedroom
2 Bath



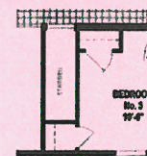
Option Walk-in Shower (shown)



Option Corner Shower



Option 60" Shower



Option Stairwell

STANDARD FEATURES

6" Walls & Northern Insulation
 8' Sidewalls & Cathedral Ceilings
 30 Year Architectural Shingled Roof
 Thermopane "Low E" Windows
 Maintenance Free Vinyl Siding
 OSB Sheathing & Wind Wrap
 Craftsman 6-Lite Front Door
 Craftsman Insulated Rear Door
 Dead Bolt Locks
 Formica Back Splashes (Ceramic in Mod)
 Floor Coverings & Window Treatments

200 Amp Service
 Whole House Water Shut Off
 22 C.F. Frost Free Refrigerator
 30" Gas Range (or Electric)
 1 Piece Fiberglass Tub (Hall Bath)
 48" Fiberglass Shower (Master Bath)
 Single Lever Faucets
 China Bath Sinks
 Hardwood Cabinet Doors & Face Frames
 Heavy Gauge Floor Vinyl
 Exterior Faucets & Outlets

RECOMMENDED FEATURES

Double Set Back Dormer
 18" Eave Overhangs (Modular only)
 Upgrade Mini Blinds
 Lighted Paddle Fan
 Cabinets Over Washer/Dryer
 Medicine Cabinets in Master Bath
 Patio Door W/Valance
 Extra LED Lights w/Dimmer-Dining Room
 Dishwasher

ADDITIONAL FEATURES SHOWN

Raised Lav and Bank of Drawers
 Space Saver Microwave
 Full Wall Mosaic Tile in Kitchen
 Farm Sink w/Upgrade Faucet
 Bench and Coat Rack
 Heavy Cove Moldings In Living Area
 Walk-In Duma Wall Shower
 Midnight Interior Fixture Package (Black)
 Midnight Exterior Doors Windows & Trim Pkg.

Town and Country Housing

4285 S. Prairie View Rd, Chippewa Falls, WI 54729
 715-834-1279

Visit us on the web at www.townandcountryhousing.com
 Specifications subject to change without notice Paint by Others



Scan for
More Information