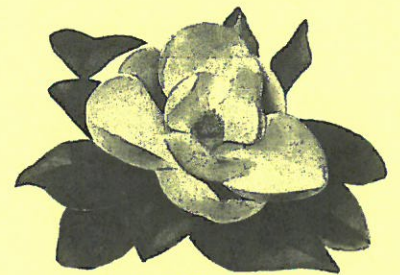
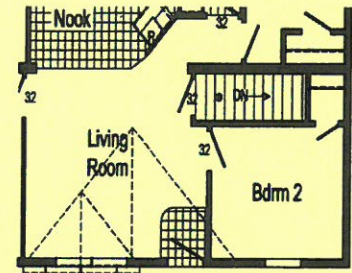
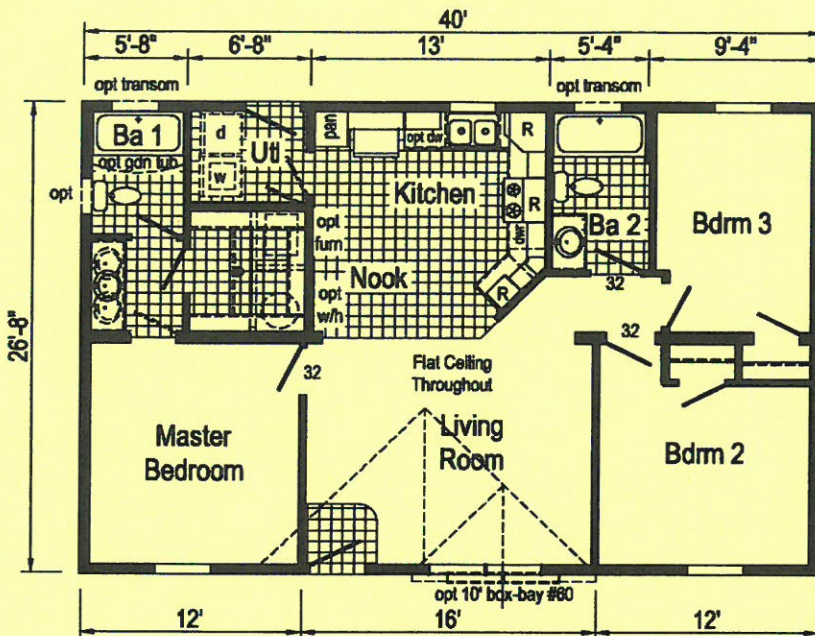


# G The Magnolia



1065 Sq Ft  
3 Bedrooms  
2 Baths



Optional Stairwell  
(relocates front exterior door)

## Standard Features

- 2x6 Exterior Walls 8' High
- Northern Insulation Package
- OSB Sheathing
- 25 Year Shingles
- Maintenance Free Vinyl Siding
- 6 Panel Front Door & Rear
- Dead Bolt Locks
- Thermopane "Low E" Windows
- 30" Gas Range
- 18 C.F. Frost Free Refrigerator
- Shaker Hardwood Cabinets
- Kitchen Counter Backsplash
- Soft Close Cabinets & Drawers

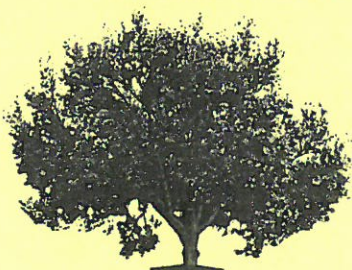
- Finished Drywall
- Mini Blinds Throughout
- Vinyl Entry
- Shelf Over Washer/Dryer
- 100 AMP Electric Service
- Energy Efficient Gas/LP Furnace
- 30 Gallon Water Heater
- Main Line Water Shut-off
- Fiberglass Tubs in Baths
- China Bath Sinks
- Bathroom Counter Backsplash
- Exterior Frost Free Faucet
- Exterior Outlet at Each Door

## Additional Features Shown

- 200 Amp Service
- 50 Gallon Water Heater
- Window in Master Bath
- Transom Window in Hall Bath

- Furnace Door
- Cathedral Ceilings
- Dishwasher
- Perimeter Heat Vents

- Paddle Fan
- Window in Rear Door
- Cabinet over Washer/Dryer
- Upgraded Structured Flow Faucets



Town and Country Housing  
4285 S. Prairie View Rd, Chippewa Falls, WI 54729  
715-834-1279

[www.townandcountryhousing.com](http://www.townandcountryhousing.com)

Specifications Subject to Change Without Notice



Scan for more information!