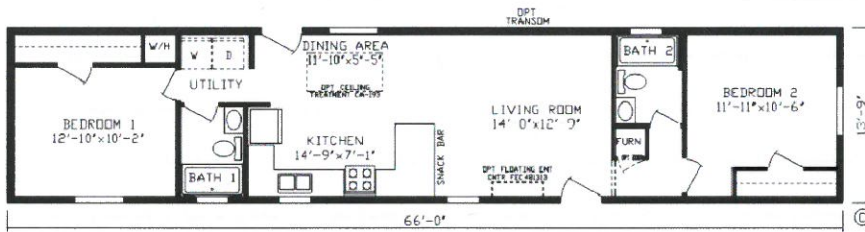


The Porter

907 Sq Ft 2 Bed 2 Bath



Standard Features

- | | | | |
|------------------------------|-------------------------------|-------------------------------|--------------------------------|
| Shingled Roof & Vinyl Siding | Stainless Steel Appliances | (1) Exterior GFI Recept | 30 Gallon Water Heater |
| Vinyl Low E Windows | Euro Hood above Range | Shaker-Style Wrapped Cabinets | 42" Overhead Kitchen Cabinets |
| Main Line Water Shutoff | 18 Cu Ft SS Frost Free Refer | 1/2 Lite Rear Door | Metal Faucets |
| OSB Sheathing | 30" SS Gas Range | 100 AMP Service | Shutters on Front and Doorside |
| 8' sidewalls | One-Piece Fiberglass Tub/Shwr | Backsplash in Kitchen & Bath | |

Additional Features Shown

- | | |
|--------------------------------|------------------------------|
| 6" Walls & Northern Insulation | Water Shutoffs Throughout |
| Wire for Paddle Fan | 40 Gal Water Heater |
| Extra Can Lights in Kitchen | OH Cabs & Rod above W/D |
| 200 Amp Service | Stub Wall next to W/D |
| Lighted Exhaust Fan in Baths | Lineals in place of Shutters |
| Add Exterior GFI Recept | Furnace Door—Metal |
| USB Recept Kitchen | Transoms above tub/showers |
| Exterior Frost Free Faucet | 200 Amp Service |

Notes:

Built by:



Scan Me

